

An underwater photograph showing two divers in blue water. One diver is in the foreground, and another is further back. A submersible or ROV is visible in the background, with logos for 'SEFREC' and 'NM' on its side. The text 'National Maritime College of Ireland at a glance' is overlaid on the image in a large, white, sans-serif font.

# National Maritime College of Ireland at a glance

## **CAO Courses**

### **Level 7**

CR 094 BSc in Nautical Science

CR 095 BEng in Marine & Plant Engineering

CR 805 BEng in Marine Electrotechnology

## **Follow on Honours Degree**

### **Level 8**

BSc (Honours) in Nautical Science

## **Other Programmes**

Higher Certificate in Science in Nautical Studies

BBus in Supply Chain & Transport Management

# NATIONAL MARITIME COLLEGE OF IRELAND



The National Maritime College of Ireland (NMCI) is located on a 10 acre campus in Ringaskiddy, Co. Cork and provides training and education for the Merchant Marine and the non-military needs of the Irish Naval Service (INS).

The NMCI provides education services of the highest quality. Specialist spaces including survival facilities, seamanship and shipwrights' workshops, fire-fighting/damage control, jetty and lifeboat facilities, and engine room are provided. The College also provides specialised simulation equipment in the areas of navigation, bridge training, communications, engineering machinery operations, liquid cargo handling/damage control and vessel traffic systems. These facilities fully comply with the most up-to-date international standards and requirements. A multi-purpose hall and sporting facilities are also included in the College. The College also undertakes refresher and short courses for STCW validation. See website for further details on these courses [www.nmci.ie](http://www.nmci.ie).



*National Maritime College of Ireland*

## Careers at Sea

Life at sea has always appealed to people who want to combine travel with a challenging career offering exciting future prospects within the associated marine industries. This is the life for those who relish the challenge of working with the sea.

Ships carry 95% of world trade and seaborne traffic is forecast to increase significantly. This is generating a great demand for high-quality personnel to manage and operate today's technically sophisticated ships. Apart from seagoing duty, the maritime industry also involves shipbuilding and ship repair, marine equipment companies, ports, surveying, administration services, insurance and law.

This major industry is looking for capable and enthusiastic people who are ready for responsibility and hard work, and who enjoy using the latest technology. You will become a key member of a highly qualified team, whether on a giant supertanker, a container ship, a cross-channel ferry,

a cruise liner, a specialised vessel servicing the offshore oil industry or on a cargo ship. Opportunities at a senior level in management, marine administration, and many other marine related areas are plentiful and experienced marine people are always sought for such positions.

*The NMCI is the designated National Centre for education and training for careers in the maritime sector.*

In addition to theoretical studies, students gain practical experience in safety, personal survival, first aid and fire-fighting. All students train with experienced seafarers at the NMCI and aboard merchant vessels worldwide. Whether the choice is Nautical Science, Marine & Plant Engineering, or Marine Electrotechnology, the student will experience the most modern resources in the world of seafarer training. There are also opportunities to advance to higher postgraduate degrees.

**See video:** [www.nmci.ie/video](http://www.nmci.ie/video)

## Student Life

Students are at the heart of any college. Here at NMCI it's no different. Due to the nature of life at sea, our students come from very diverse backgrounds and have a very broad age profile. Most come directly from second level schools and colleges, however, many are seasoned seafarers returning to gain further qualifications so that they can advance in their careers at sea.

## General Facilities

There is a cafeteria where breakfast, lunch, and hot meals are served. NMCI has a hall for indoor sports and a gym equipped with weights equipment. An instructor is available to design fitness programmes. NMCI students registered with Cork Institute of Technology are entitled



to avail of facilities and sports clubs on the main campus in Bishopstown. There are very active diving and sailing clubs which use the facilities at NMCI, as well as soccer and rugby clubs.

The Learning Resource Centre (LRC) is a focal point for students outside the classroom environment. Here students can use the open access computers, read at individual study spaces and browse in the library.

Currently, the library has a book stock of approximately 4,000 volumes and this collection will be developed on an ongoing basis with support from Cork Institute of Technology and the Irish Naval Service as well as donations of funds and materials from external organisations. The library has a maritime focus and subjects covered range from law, meteorology and marine engineering to seamanship and navigation.

As a constituent college of Cork Institute of Technology, NMCI students can request materials from other CIT Libraries and can access online databases.

### **Student Accommodation**

There is purpose built student accommodation available locally at Ferryview Park in Ringaskiddy which is approximately 10 minutes' walk from NMCI.

For further information please view [www.ferryviewpark.com](http://www.ferryviewpark.com)

Irish Naval Service students have accommodation provided at the Naval Base in Haulbowline.

### **Courses for Professional Seafarers Certificates of Competency (Post Degree)**

Certificates of Competency are required under the Merchant Shipping Acts for personnel in positions of responsibility on board ships. The National Maritime College of Ireland offers preparatory courses for the mandatory certification examinations which are conducted by CIT on behalf of the Department of Transport. Courses for senior or post degree personnel and other short courses are available for those who require to progress from the Officer of the Watch level to the Chief Engineer or Master level of Certificate of Competency.



# Nautical Science

## CR 094 Level 7 Award

>> Progression to Honours Degree

**Application:** CAO

**Award Title:** Bachelor of Science in Nautical Science

**Duration:** 3 Years (6 Semesters) including seetime

**Places:** 36

**Location:** National Maritime College of Ireland, Ringaskiddy, Co. Cork.

**CAO Points in 2011: Round 1:** 345 / **Final:** 315

### Minimum Entry Requirements Leaving Certificate in 5 Subjects

Subjects D3 (O/H)	Subjects C3 (H)	Maths Grade	English or Irish Grade
5	0	D3 (O/H)	D3 (O/H)

**Note 1:** The programme is normally available only to Irish citizens and EU citizens who are ordinarily resident in Ireland unless prior support is obtained from a recognised/approved Shipping Company.

**Note 2:** Applicants for this course must be capable of passing the approved medical fitness and eyesight tests as specified by the Maritime Safety Directorate of the Department of Transport and are requested to attend a career advisory session. Offer of a place on the course will be subject to passing the Medical and Eyesight Tests at the time of offer.

### What is Nautical Science?

Nautical Science has three main elements: Navigation and ship handling, in other words, the conning and control of a ship; the safe operation of a ship, including the protection of life and the environment; Shipboard administration, and the handling, loading and care of cargoes which may be as diverse as petroleum products, general cargo, or thousands of new cars or passengers.

### Helpful Leaving Certificate Subjects

Mathematics, Science subjects, English, and Engineering.

### Work Placement

There is a mandatory work placement of 15 months seetime in Year 2.

### Potential Areas of Employment

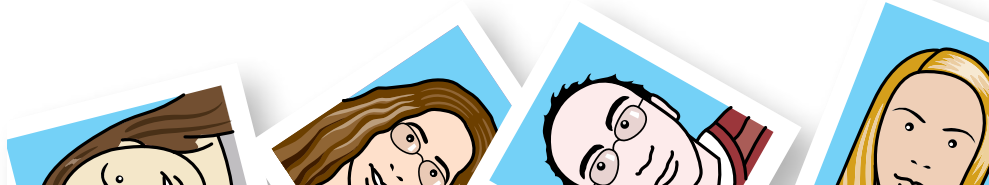
- Ship's Officer (from Junior Ranks to Captain)
- Harbour Pilot
- Coastal Boat/Shipping
- Educator in a Nautical Institution



myCIT  
myCourse

*"Had a great first year. Worked hard at my subjects, and enjoyed the short courses. Enjoyed also the sailing club and the events away. Made great new friends."*

**Alice Harding**



## Module Information

<http://modules.cit.ie/cr094>

CIT has developed a website which gives full details of all modules for all courses. The website also has information on recommended textbooks, average weekly workload, assessments and exams.

## About the Course

This course is designed for those who wish to pursue a career as a Deck Officer aboard ship. It provides a comprehensive education in navigation and other ship board activities. Students who successfully complete Year 1 are expected to be placed in a commercial ship in Year 2, gaining fifteen months seetime for practical training experience, and to gain the necessary 'seetime' for the Department of Transport Certificate of Competency. In addition, they must complete a comprehensive workplace training programme including training records, journals and other documents associated with the training programme, as specified from time to time.

It should be noted that while every endeavour will be made to secure suitable sea training placement, this is outside the control of CIT/NMCI and the College cannot accept responsibility for difficulties in securing such placement.

## Further Studies

For details, see [www.cit.ie](http://www.cit.ie) and [www.nmci.ie](http://www.nmci.ie)

Suitably qualified graduates are eligible to apply for entry to the one year add-on

→ Bachelor of Science (Honours) in Nautical Science

## Career Opportunities

Graduates first become Officer of the Watch on a vessel after graduating and passing relevant examinations. They can advance to Chief Mate or Ship's Captain with further study, examinations, and seetime. Careers exist on all different type of ocean going vessels: bulk carriers, oil tankers, container ships, cruise and ferry vessels. There are also careers on specialist vessels, such as seismic and exploration ships, pilot vessels, tugs and mega yachts.

## Contact Information

Admissions Office,  
National Maritime College of Ireland,  
Ringaskiddy, Co. Cork.  
T: +353 (0) 21 497 0643  
F: +353 (0) 21 497 0696  
E: [admissions@nmci.ie](mailto:admissions@nmci.ie)  
W: [www.nmci.ie](http://www.nmci.ie)

## Question Time

### How successful is the College at securing work placement?

Very successful. Suitable qualified personnel with relevant qualifications are always in demand in the industry.

### How do I go about getting a Shipping Company to sponsor me while I am in College?

The College endeavours to place all students on vessels. To-date it has been successful.

### Do I have to work for the Shipping Company once I graduate?

No. The commitment from the sponsoring companies usually ends upon graduation. However, a significant number of students go on to work as an officer with their sponsors.

### How much sea going experience do I need before I can apply to sit for a Master's Ticket?

A minimum of 36 months sea-service is required to progress to Ship's Captain. With leave and further study requirements, this generally takes six to seven years to complete.



**myCIT**  
**myCareer**



**Sinéad Reen**  
Master Mariner

After Sinéad commenced the Nautical Science Degree course, she worked on ships as a Navigating Officer to gain experience before returning to CIT to obtain qualifications as First Mate.

Sinéad qualified as a Master Mariner when she successfully completed her Department of Transport professional examinations. She has the proud distinction of being the first woman to be issued with a Certificate of Competency as Master Mariner in Ireland.

NMCI Open Day 23 October

# Marine & Plant Engineering

## CR 095 Level 7 Award

>> Progression to Chief Engineer

**Application:** CAO

**Award Title:** Bachelor of Engineering in Marine & Plant Engineering

**Duration:** 3 Years (6 Semesters) + 1 Year Work Placement

**Places:** 40

**Location:** National Maritime College of Ireland, Ringaskiddy, Co. Cork.

**CAO Points in 2011: Round 1:** 340 / **Final:** 305

### Minimum Entry Requirements Leaving Certificate in 5 Subjects

Subjects D3 (O/H)	Subjects C3 (H)	Maths Grade	English or Irish Grade
5	0	D3(O/H)	D3 (O/H)

**Note 1:** The full programme is normally available only to Irish citizens and EU citizens who are ordinarily resident in Ireland unless prior support is obtained from a recognised/approved Shipping Company.

**Note 2:** Applicants for this course must be capable of passing the approved medical fitness and eyesight tests as specified by the Maritime Safety Directorate of the Department of Transport and are requested to attend a career advisory session. Offer of a place on the course will be subject to passing the Medical and Eyesight Tests at the time of offer.

### What is Marine & Plant Engineering?

The function of the Marine Engineer is to operate and maintain the engines, boilers, generators and other systems of ships. Most of the mechanical equipment aboard ship is operated and maintained by Marine Engineers. This course aims to provide a sound knowledge base of Marine Engineering.

### Helpful Leaving Certificate Subjects

Mathematics, Science subjects, Engineering, and English.

### Work Placement

On completion of Year 2, students partake in work placement at sea for a minimum of 52 weeks.



myCIT  
myCourse

*"Besides learning mechanics and thermodynamics, you get a lot of practical experience in workshops, machines, and other equipment on board ships. The subjects are varied and the year at sea really brings a lot of things together. It is a great and exciting career."*  
**Cian Murphy**



[www.cit.ie/course/CR095](http://www.cit.ie/course/CR095)



## Module Information

<http://modules.cit.ie/cr095>

CIT has developed a website which gives full details of all modules for all courses. The website also has information on recommended textbooks, average weekly workload, assessments and exams.

## Potential Areas of Employment

- Ship's Officer (from Junior Ranks to Chief Engineer)
- Company land based engineering support and dry docking
- Power Plant Engineers, similar to ships
- Marine Surveyors

## About the Course

As well as lectures, training is provided in marine, electrical, welding and mechanical workshops, supplemented with practical work in the College engine room and simulation exercises in the machinery and cargo-handling simulation suites.

Students who successfully complete Year 1 and 2 are expected to be placed in a commercial ship, for practical training experience, and to gain the necessary 'seatime' for the Department of Transport Certificate of Competency, in their third year. In addition while at sea, they must complete a comprehensive workplace training programme including training records, journals and other documents associated with the training programme, as specified from time to time.

It should be noted that while every endeavour will be made to secure suitable sea training placement, this is outside the control of CIT/NMCI and the College cannot accept responsibility for difficulties in securing such placement.

## Further Studies

For details, see [www.nmci.ie](http://www.nmci.ie)

There are opportunities for further study in order that cadets will progress from the Officer of the Watch Level on to the Second Engineer Officer Certificate of Competency and in due course to the Chief Engineer Officer Certificate of Competency with a combination of Sea-Service, further study and examinations.



## Career Opportunities

Graduates first become Officer of the Watch on a vessel after graduating and passing relevant examinations. They can advance to Second Engineer or Chief Engineer with further study, examinations, and seetime. Careers exist on all different type of ocean going vessels: bulk carriers, oil tankers, container ships, cruise ships, and ferry vessels.

## Contact Information

Admissions Office,  
National Maritime College of Ireland,  
Ringaskiddy, Co. Cork.  
T: +353 (0) 21 497 0643  
F: +353 (0) 21 497 0696  
E: [admissions@nmci.ie](mailto:admissions@nmci.ie)

## Question Time

### How do I go about getting a Shipping Company to sponsor me while I am in College?

The College endeavours to place students with shipping companies and has been successful to date.

### Do I have to work for the Shipping Company once I graduate?

Yes, as your training centres around that environment and you have to complete your seetime for advanced qualification.

### How much sea going experience do I need before I can apply to sit for a Chief Engineer's Ticket?

The minimum is approximately three years on suitable vessels and voyages.

**myCIT**  
**myCareer**

**Eoin O'Sullivan**  
Senior Marine Engineer



Eoin graduated in Marine & Plant Engineering. He is currently serving as a Chief Engineer on a speciality vessel (FPSO) in the production and storage area of exploration off the coast of Brazil, working one month on and off.

Eoin obtained the Chief Engineering Certificate of Competency. Eoin found the College facilities excellent. "Most of the lecturers have spent time at sea and use their experience to teach their skills. The standard of education is very high."

NMCI Open Day 23 October

# Marine Electrotechnology

## CR 805 Level 7 Award

>> Progression to Electro Technical Officer on ocean-going vessels

**Application:** CAO

**Award Title:** Bachelor of Engineering in Marine Electrotechnology

**Duration:** 3 Years (6 Semesters) + 1 Year Work Placement

**Places:** 20

**Location:** National Maritime College of Ireland, Ringaskiddy, Co. Cork.

**CAO Points in 2011: Round 1:** 280 / **Final:** 270

### Minimum Entry Requirements Leaving Certificate in 5 Subjects

Subjects D3 (O/H)	Subjects C3 (H)	Maths Grade	English or Irish Grade
5	0	D3 (O/H)	D3 (O/H)

**Note 1:** The full programme is normally available only to Irish citizens and EU citizens who are ordinarily resident in Ireland unless prior support is obtained from a recognised/approved Shipping Company.

**Note 2:** Applicants for this course must be capable of passing the approved medical fitness and eyesight tests as specified by the Maritime Safety Directorate of the Department of Transport and are requested to attend a career advisory session. Offer of a place on the course will be subject to passing the Medical and Eyesight Tests at the time of offer.

### What is Marine Electrotechnology

An Electro Technical Officer (ETO) operates, maintains and calibrates all electrical, electronic and control equipment. The ETO's role is not restricted to the engine room and may also work on complex systems located throughout any vessel.

### Helpful Leaving Certificate Subjects

Mathematics, Science subjects, Engineering, and English.

### Work Placement

On completion of Year 2, students partake in work placement at sea for a minimum of 52 weeks.

### Potential Areas of Employment

- Electro Technical Officers
- Marine Electronic Maintenance
- Aviation Instrumentation Maintenance



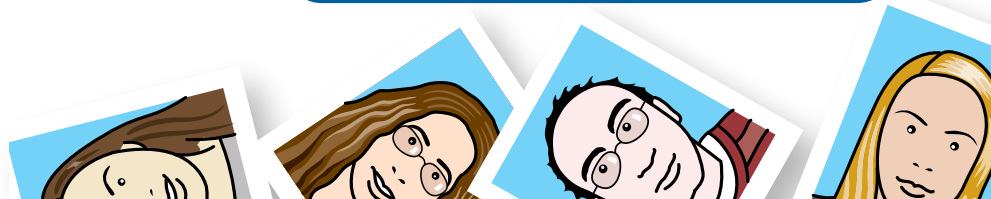
myCIT  
myCourse

*"I found the course difficult at times, but the subjects were very interesting, especially the workshops. Looking forward to next year and doing more electrotech subjects."*

Jim Duffy



[www.cit.ie/course/CR805](http://www.cit.ie/course/CR805)



## Module Information

<http://modules.cit.ie/cr805>

CIT has developed a website which gives full details of all modules for all courses. The website also has information on recommended textbooks, average weekly workload, assessments and exams.

## About the Course

The course shares its first two semesters with the CR 095 BEng in Marine and Plant Engineering. Having completed Year 1, Marine Electrotechnology students begin specialist electrical and electronic training. As well as lectures, training is provided in a variety of workshops and laboratories. This practical work is given to enhance the students' learning experience. Practical knowledge of fundamental theories is gained in electrical, electronic, communications, and control laboratories. A broad understanding of ships and ships' systems is delivered in electrical workshops and in the College's own engine room.

Students who successfully complete Year 1 and 2 are expected to be placed in a commercial ship, for practical training experience, and to gain the necessary 'seaside' for the Department of Transport Certificate of Competency, in their third year. In addition while at sea, they must complete a comprehensive workplace training programme including training records, journals and other documents associated with the training programme, as specified from time to time.

Every effort is made to secure sea berths with shipping companies, but this cannot be guaranteed by the NMCI/CIT.

## Further Studies

For details, see [www.nmci.ie](http://www.nmci.ie)

There are opportunities for further study in related fields at the Honours Degree level. Graduates will be well placed to pursue further studies in either electrical or electronic engineering.

## Career Opportunities

Electro Technical Officers of a high standard are particularly sought after within the cruise line industry. There are also a number of opportunities ashore in a wide variety of fields including marine electronic maintenance and aviation instrumentation maintenance industries.

## Contact Information

Admissions Office,  
National Maritime College of Ireland,  
Ringaskiddy, Co. Cork.  
T: +353 (0) 21 497 0643  
F: +353 (0) 21 497 0696  
E: [admissions@nmci.ie](mailto:admissions@nmci.ie)  
W: [www.nmci.ie](http://www.nmci.ie)

## Question Time

### How successful is the college at securing work placement?

The College endeavours to place students with shipping companies and has been successful to date.

### If I graduate with this Level 7 degree, can I further my studies in CIT as an Electronic or Electrical Engineer at Level 8?

CIT has a Recognition of Prior Learning System, detailed information at [www.cit.ie/rpl](http://www.cit.ie/rpl). Applicants may be exempted from modules in courses which are similar.



# Nautical Studies

## Level 6 Award

**Application:** NMCI. Application form available at [www.nmci.ie](http://www.nmci.ie)

**Award Title:** Higher Certificate in Science in Nautical Studies

**Duration:** 3 years approximately

**Places:** 20

**Location:** National Maritime College of Ireland, Ringaskiddy, Co. Cork

### Admission Requirements

Applicants should be at least 17 years of age. Applicants are normally expected to have reached the Leaving Certificate level of the Department of Education & Skills or equivalent standard. Applicants for this course may be asked to attend a College interview. All applicants must pass the Seafarer Medical and eyesight tests as specified by the Maritime Safety Directorate of the Department of Transport.

### What is Nautical Studies?

Nautical Studies provides training for a Seaman onboard a merchant vessel involving shipboard maintenance, and handling of cargo. It also provides a route to Deck Officer training.

### Helpful Leaving Certificate Subjects

Mathematics, Science subjects, and English.

### Work Placement

There is a mandatory in-service training or work placement onboard ships at sea.

### Potential Areas of Employment

- Category 2 Seaman
- Category 1 Seaman
- Officer of the Watch



myCIT  
myCourse

*"NMCI's hands-on approach to training gives a great base to start your career at sea."*

**Aidan Kneeshaw**



[www.nmci.ie/video](http://www.nmci.ie/video)



## Module Information

<http://modules.cit.ie>

CIT has developed a website which gives full details of all modules for all courses. The website also has information on recommended textbooks, average weekly workload, assessments and exams.

## Admission Requirements

Applicants should be at least 17 years of age. The full programme is normally available only to Irish citizens and EU citizens who are ordinarily resident in Ireland unless prior support is obtained from a recognised/approved Shipping Company.

Applicants with at least 36 months approved seetime may apply for Recognition of Prior Learning ([www.cit.ie/rpl](http://www.cit.ie/rpl)). Where work based learning is accepted, the applicant may only be required to complete Semesters 4 and 6.

**N.B.** Applicants for this course may be asked to attend a college interview. All applicants must pass the Seafarer Medical and eyesight tests as specified by the Maritime Safety Directorate of the Department of Transport.

## About the Course

This course provides an opportunity to train for a career as a Seaman or as a Deck Officer in the Merchant Navy. Applicants who train as a Seaman will exit the course after approximately 16 months having attained the Certificate in Seamanship, a minor award associated with the Higher Certificate. They will then be able to obtain employment at sea as a Category 2 Seaman.

The Higher Certificate programme includes in-service training or work placement onboard ship at sea. During this work placement the student works alongside the ship's crew and officers in the operation of the vessel. All in-service training is supported by work placement modules which must be completed by the student.

It should be noted that while every endeavour will be made to secure suitable sea training placement, this is outside the control of CIT/NMCI and the College cannot accept responsibility for difficulties in securing such placement.

## Further Details

For details, see [www.nmci.ie](http://www.nmci.ie)

Holders of the OOW Certificate may proceed to:

1. Chief Mate/Master on vessels of 500 to 3000 gross tonnage
2. Chief Mate/Master on vessels of greater than 3000 gross tonnage

The most appropriate avenue is one of personal preference. However, option 2 gives the widest range of job opportunities and the possibility of a shore based job.

## Career Opportunities

Successful students completing the full course will obtain a Level 6 Higher Certificate in Science in Nautical Studies. On completion of a Department of Transport oral examination, they will be issued with a Certificate of Competency as Officer of the Watch on a vessel of more than 500 gross tonnage. This qualifies the holder to serve as a Junior Deck Officer on board a merchant vessel trading worldwide.

## Contact Information

Admissions Office,  
National Maritime College of Ireland,  
Ringaskiddy, Co. Cork.  
T: +353 (0) 21 497 0643  
F: +353 (0) 21 497 0696  
E: [admissions@nmci.ie](mailto:admissions@nmci.ie)

## Question Time

### How long is the Department of Transport oral examination and where does the exam take place?

The Department of Transport oral examinations can last approximately an hour. They take place in the Marine Surveyors Office, Department of Transport, Leeson Lane, Dublin.

### How much sea going experience do I need before I can apply for Chief Mate/Master on vessels of 500 to 3000 gross tonnage?

You must have a total of 12 months sea service as an officer to apply. This may take a candidate approximately two years to achieve, depending on their work/leave ratio.

### Does NMCI offer similar Certificate Courses in Nautical Studies?

Yes, NMCI offers a Level 6 Certificate in Seamanship. Due to the significant work placement, it takes approximately 16 months to complete. On successful completion, you may obtain employment at sea as a Category 1/2 Seaman or you may opt to progress to the Higher Certificate in Nautical Studies.

myCIT  
myCareer



John Conlon  
Master Mariner

John qualified as an Officer of the Watch and worked on Bulk Carriers for a number of years before returning to NMCI to complete qualifications as Chief Officer. He qualified as Master Mariner and is now serving as Master with Arklow Shipping.

"The training was very practical with a wide range of career opportunities to choose from."

NMCI Open Day 23 October

# Supply Chain and Transport Management

## Level 7 Award

**Application:** NMCI. Application form available at [www.nmci.ie](http://www.nmci.ie)

**Award Title:** Bachelor of Business in Supply Chain and Transport Management

**Duration:** 1 Year (2 Semesters) on an evening/weekend basis

**Location:** National Maritime College of Ireland, Ringaskiddy, Co. Cork

### Admission Requirements

Chartered Institute of Logistics and Transport (CILT) or IIPMM (Procurement and Supply Chain Management) Diploma or Graduateship in Supply Chain Management or an equivalent Level 6 qualification in a relevant discipline.

### What is Supply Chain and Transport Management?

Logistics and Transport Management is that part of the supply chain which plans, implements and controls the efficient, effective forward and reverse flow and storage of goods, services and related information between the point of origin and the point of consumption in order to meet customer and legal requirements while simultaneously improving performance, costs and flexibility.

The concept has been defined in simpler terms and is often captured with five words:

**Plan, Source, Make, Deliver, Return.**

### Helpful Leaving Certificate Subjects

Mathematics, Science subjects, and English.

### Work Placement

There is a mandatory in-service training or work placement onboard ships at sea.

### Potential Areas of Employment

- Supply Chain Manager
- Transportation Provider
- Customs Liaison Officer
- Procurement Manager



myCIT  
myCourse

*"I found the course to be very informative and of great benefit to me in my current job. I would recommend the course to anyone working in or thinking of working in Supply Chain Management."*

**Claire Murphy**



[www.cit.ie/course/CR\\_BSCTM\\_7](http://www.cit.ie/course/CR_BSCTM_7)



## Module Information

<http://modules.cit.ie>

CIT has developed a website which gives full details of all modules for all courses. The website also has information on recommended textbooks, average weekly workload, assessments and exams.

## About the Course

This course is a one year step up Degree and is designed for those who have experience in the Logistics and Supply Chain Management and who wish to further their career prospects. The elements of Supply Chain Management have always existed in business. What changed was the willingness of businesses to recognise the inter-relationship of the various sub-functions, and to pursue the benefits generated through coordination and integration, both from a strategy/planning perspective and operationally.

Modules comprise Quality and Lean Operations; Managing Performance Measurement; International Trade & Customs Law; Operations Management; and Organisational Structure and Human Resource Development.

Supply Chain: Business, Warehousing, Transport, Management Accounting & Management Finance, IT and E Commerce, Purchasing, Leadership and Communications.

### Benefits:

You will be one of the elite few

- who will possess a Degree in Supply Chain and Transport Management;
- who, as a result, will secure challenging, better paid and more fulfilling positions in Supply Chain;
- who will be empowered with the knowledge and skills to implement the latest best practices in Supply Chain Management in your organisation.

## Career Opportunities

As more and more responsibility is placed on the Supply Chain Management and Logistics functions, the need has intensified for its practitioners to be highly skilled in the various elements of Supply Chain Management and to be completely up-to-date with best practices in the industry both locally and globally. Logisticians must take their place alongside engineers and accountants as proficient and exceptionally well-trained professionals.

## Contact Information

Admissions Office,  
National Maritime College of Ireland,  
Ringaskiddy, Co. Cork.  
T: +353 (0) 21 497 0643  
E: [admissions@nmci.ie](mailto:admissions@nmci.ie)  
or  
Jane O'Keeffe  
E: [jokeeffe@nmci.ie](mailto:jokeeffe@nmci.ie)

## Question Time

### How much will the course cost?

The course fee is currently €2,800.

### When and where do the lectures take place?

The lectures take place at the National Maritime College of Ireland in Ringaskiddy, Co. Cork, on Saturdays and one night a week (after discussion with group).



myCIT  
myCareer

Ian O'Reilly  
Site Lean Six Sigma Leader



"This course offered me the chance to gain a degree in my field. The course was structured, relevant, and motivating. The modules on Quality and Lean Operations and Managing Performance Measurement were particularly enlightening.

I have recently been promoted to the position of Site Lean Six Sigma Leader. I have no doubt that this Degree was a key factor in helping me to progress my career."

NMCI Open Day 23 October

# NMCI MASTER CHART

Course Code	Course Name	Page No.	Initial Award	Duration in Years	Higher Certificate Step-off Available	No. of 1st Year Places	Round 1 Points 2011	Final Points 2011	No. of L.C. Subjects	No. of C3 (H) Grades	Maths Grade	English or Irish Grade	Early Assessment Procedures	INITIAL AWARD & PROGRESSION OPPORTUNITIES AT CIT		
														Bachelor Degree	Honours Bachelor Degree	Post Grad
CR 094	Nautical Science	117	Bachelor Degree	3		36	345	315	5	0	D3 (O/H)	D3 (O/H)	✓ (Ref.1)	✓	✓	✓ (Ref.2)
CR 095	Marine & Plant Engineering	119	Bachelor Degree	4*		40	340	305	5	0	D3 (O/H)	D3 (O/H)	✓ (Ref.1)	✓	✓	✓ (Ref.3)
CR 805	Marine Electrotechnology	121	Bachelor Degree	4*		20	280	270	5	0	D3 (O/H)	D3 (O/H)	✓ (Ref.1)	✓	✓	✓ (Ref.4)

Ref.1 Applicants for this course must be capable of passing the approved Medical Fitness and Eyesight tests and are requested to attend a Career Advisory Session. Offer of a place on the course will be subject to passing the medical & eyesight tests at the time of offer.

Ref.2 Further study at NMCI to Ship's Master.

Ref.3 Further study at NMCI to Chief Engineer.

Ref.4 Progression to Electro Technical Officer on ocean going vessels.

\* Duration of CR 095 and CR 805 is 3 Years (6 Semesters) and 1 Year work placement.

NOTE: Round 1 Points 2012 can be found inside the cover of this Handbook.

Number of First Year Places may change.

Leaving Certificate (LC)

